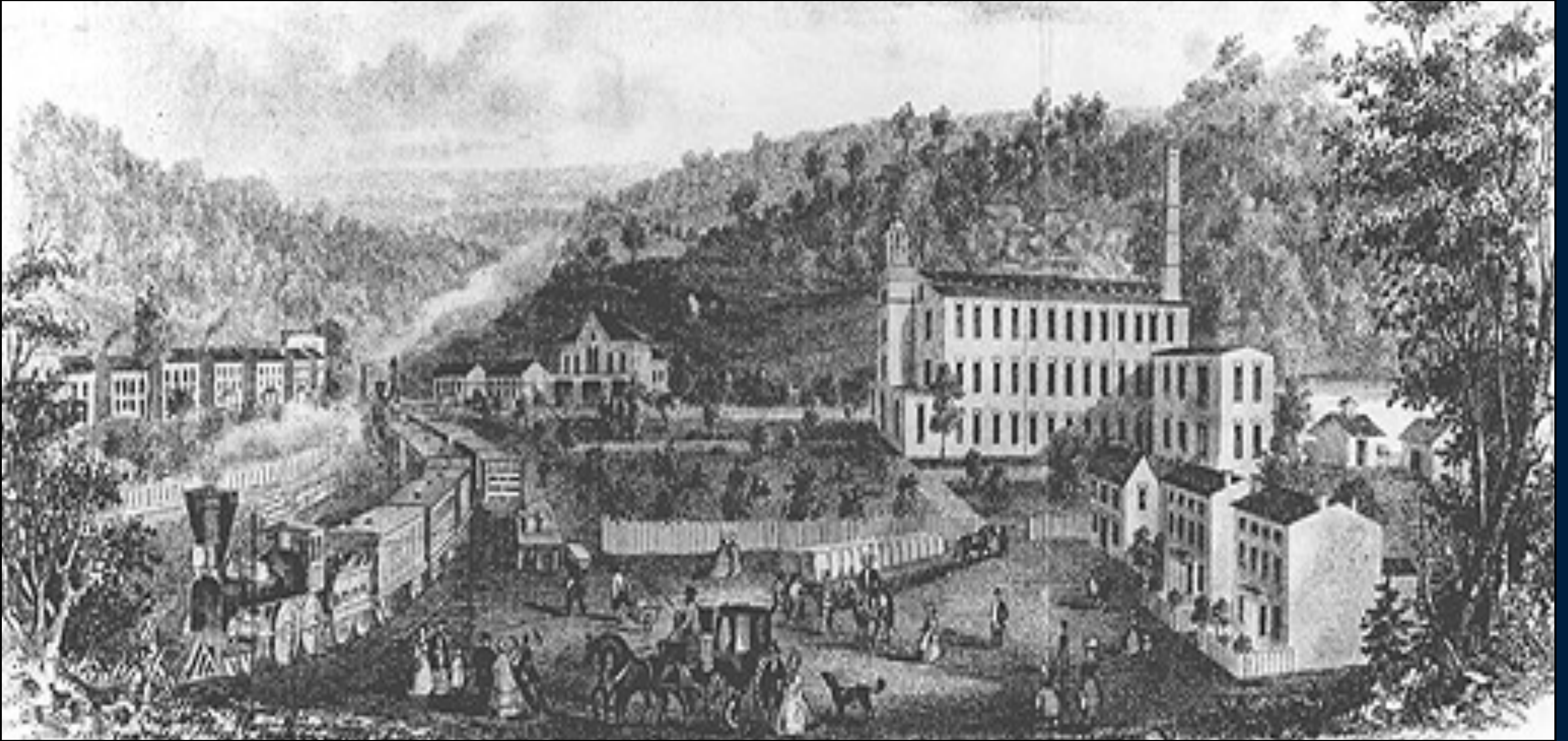
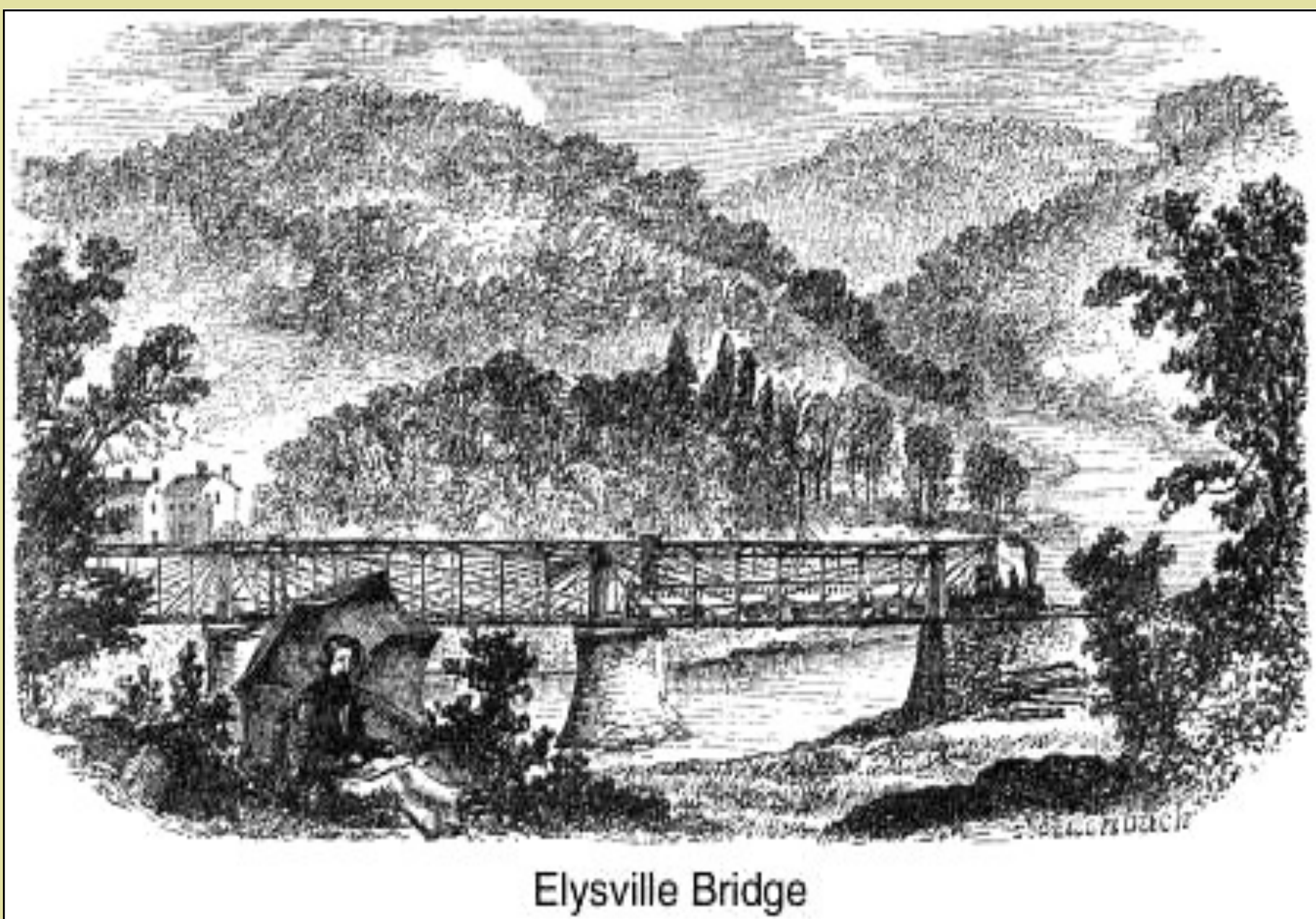


DANIELS, MARYLAND

1830 - 1972

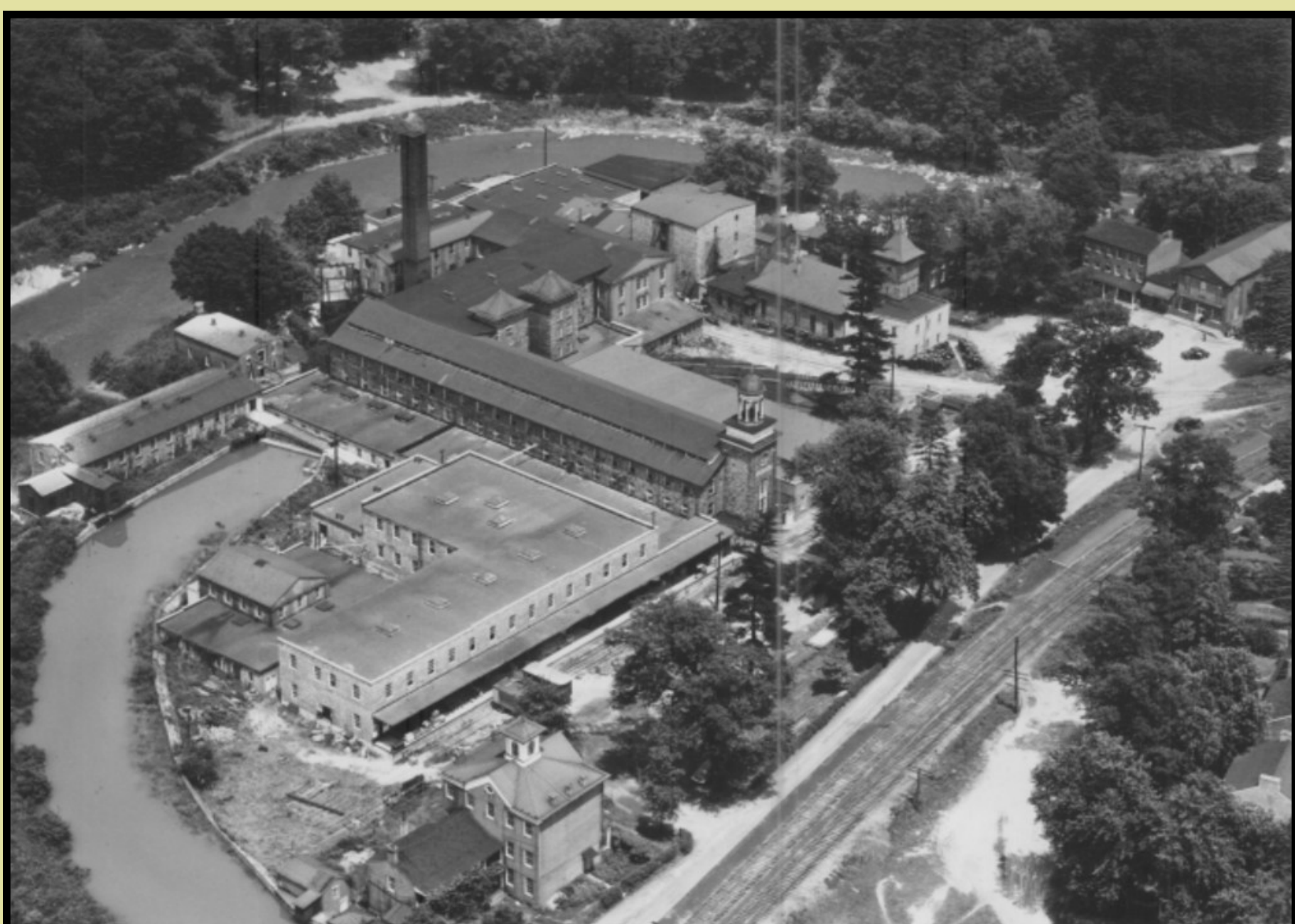


The town of Daniels began as the small mill village of Elysville. The industrial community was representative of the many mill towns that once flourished in the region during the height of the Industrial Revolution. Located along the Patapsco River, Elysville was one of the earliest railroad communities in the country. The first railroad station in the nation was constructed at Ellicott's Mills and soon passenger train service, as well as material transport, was established along the route. The Baltimore and Ohio Railroad passed through Elysville in 1831 on its route west to Point of Rocks, Maryland. The arrival of the B&O Railroad in the valley was an incentive to industry.



Elysville Bridge

The growth of Elysville brought many changes to the natural landscape, with the introduction of dam, millrace, and rail tracks shaping a new industrial landscape. Harnessing what they needed from the environment, such as timber, coal, and waterpower, a community grew at the site. As a small town, complete with homes, a company general store, school, churches and a post office, it became a predominantly self-sufficient village.



The village was renamed Alberton in 1854, upon change in ownership, but a tumultuous period followed. The mill village suffered floods and ownership transferred repeatedly until strong management finally brought a period of prosperity. Alberton grew into a model company town reflecting many of the moral and cultural values of the era. By the end of the twentieth century, however, after major demolition, flooding, and fire, little evidence of the village remained.

